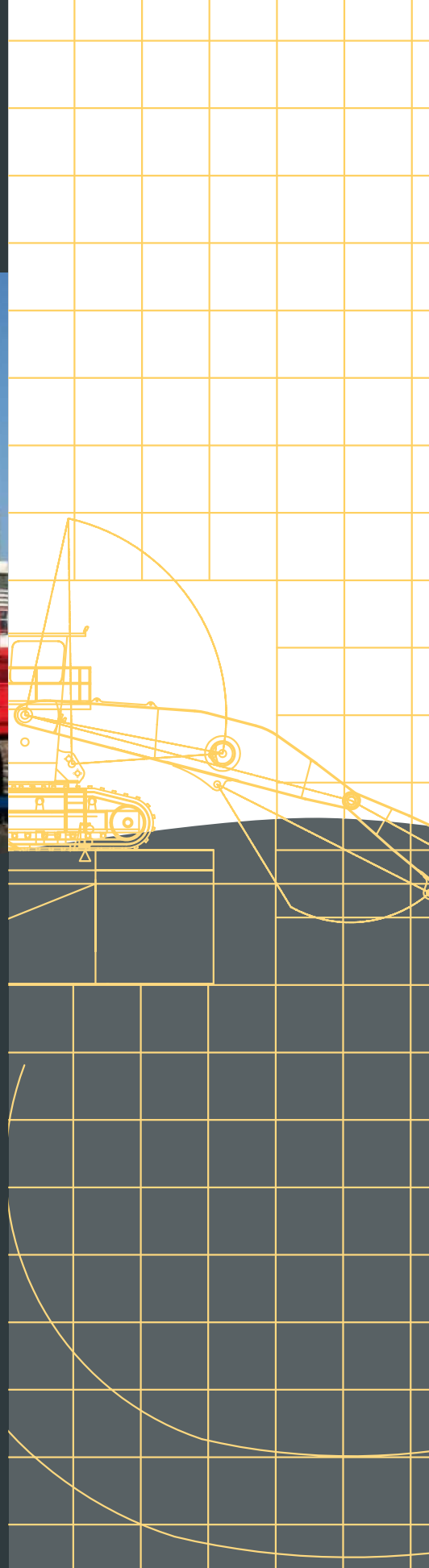
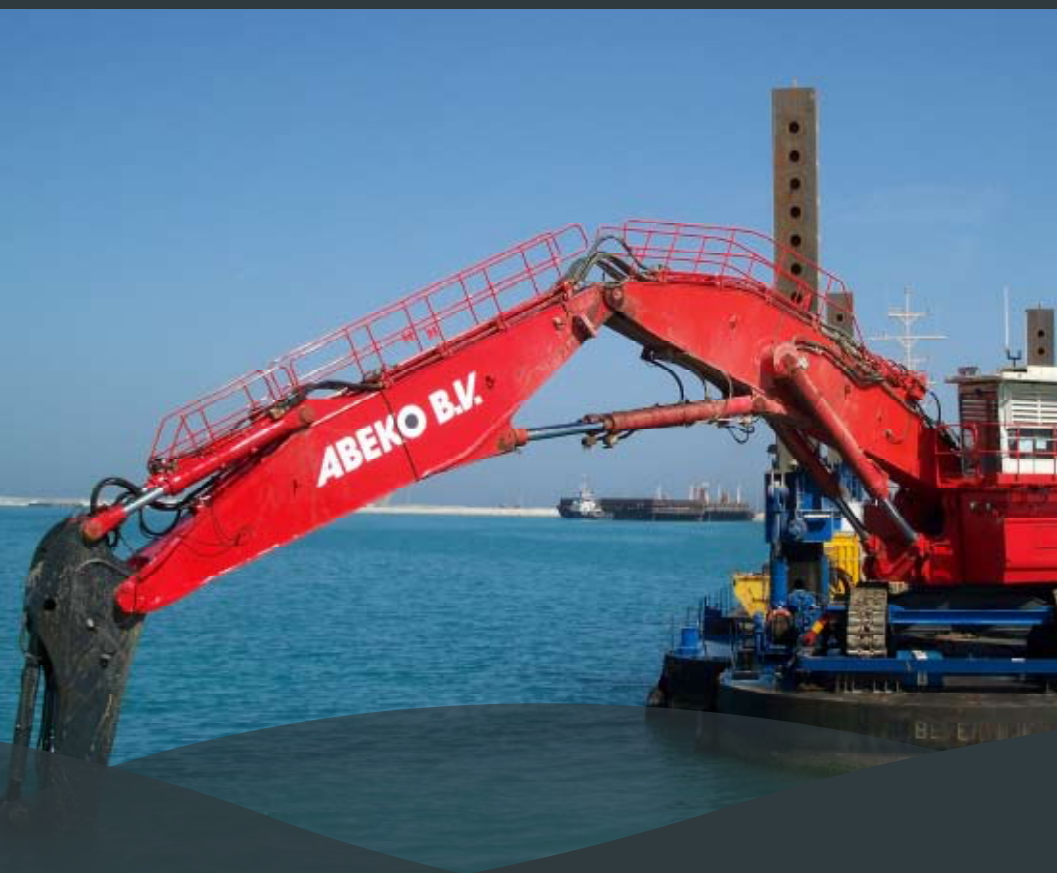


ABEKO MARINE



TEREX O&K RH90

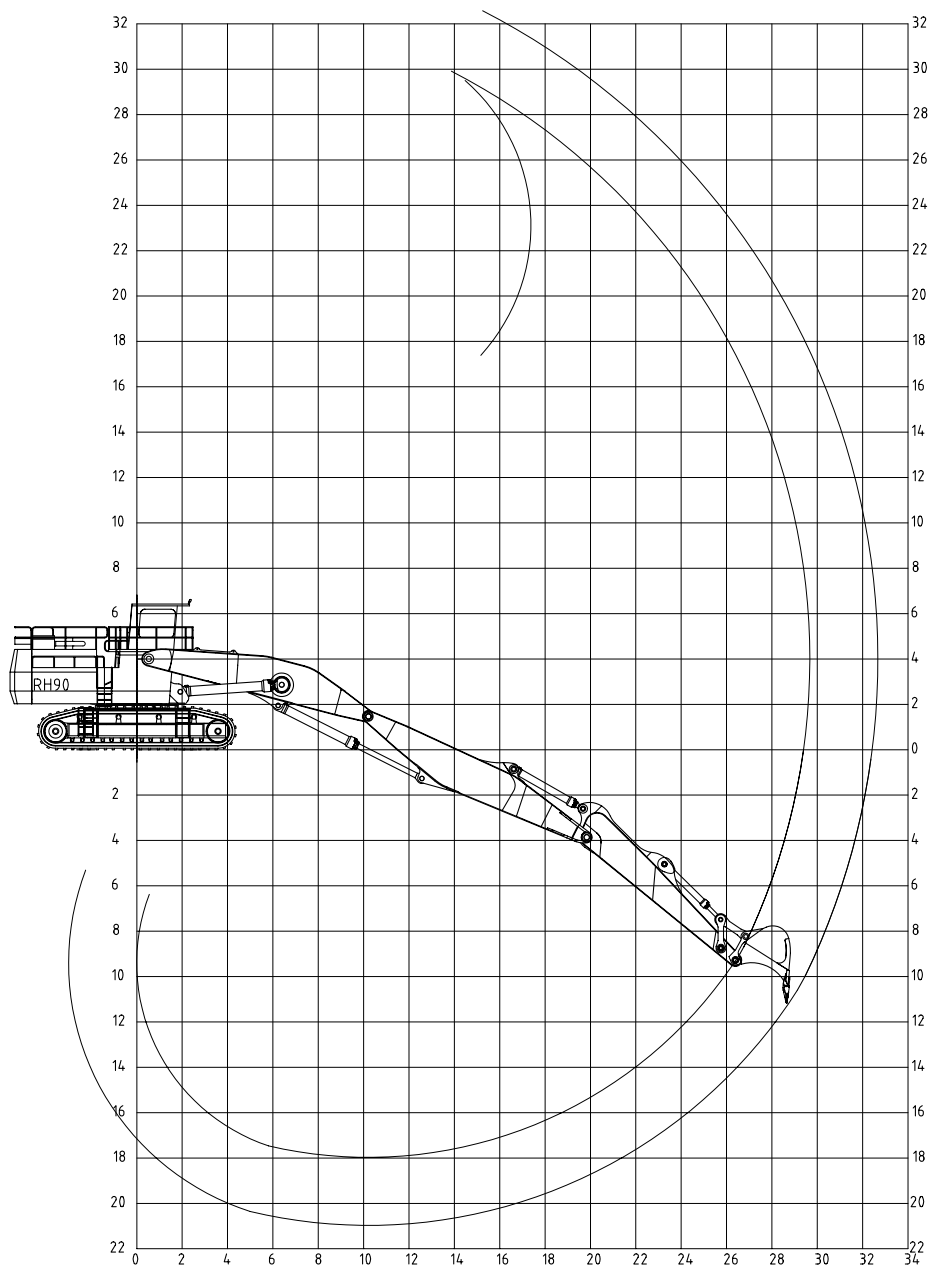
OPERATING WEIGHT: 300 TON

BACKHOE BUCKET: 5M³ - 8M³

REACH: 33M

DIGGING FORCE: 55 TON

Diggingcurve Terex O&K RH90
with 8.5m stick.



EXCAVATOR

FABRICATION AND TYPE	: TEREX O&K RH90C
BUILDING YEAR	: 2007
WEIGHT	: 300 TON
EXCAVATOR ENGINE POWER	: 760KW
MAXIMUM DREDGING DEPTH	: 21M
BUCKET CAPACITY HD	: 5M ³
BUCKET CAPACITY MUD BUCKET	: 8M ³
BOOM	: ABEKO TRIPLE BOOM
STICK/ARM	: SHORT = 5.5M AND LONG = 8.5M
WORK TOOLS	: HYDRAULIC BREAKER, BUCKETS, CLAMHELL-GRABS, GRAPPLE, GRAB, RIPPER
SPECIALITIES	: TRACK TYPE EXCAVATOR TRIPLE BOOM EXTENDED UNDERCARRIAGE UPGRADED CYLINDERS SAFETY VALVES ON ALL HYDRAULIC CYLINDERS



TRENCHING AND BACKFILLING ON THE
SAFFANIYAH PROJECT IN SAUDI ARABIA



DREDGING IN RAS LAFFAN (QATAR)



BACKFILLING OF ROCK IN RAS LAFFAN
(QATAR)