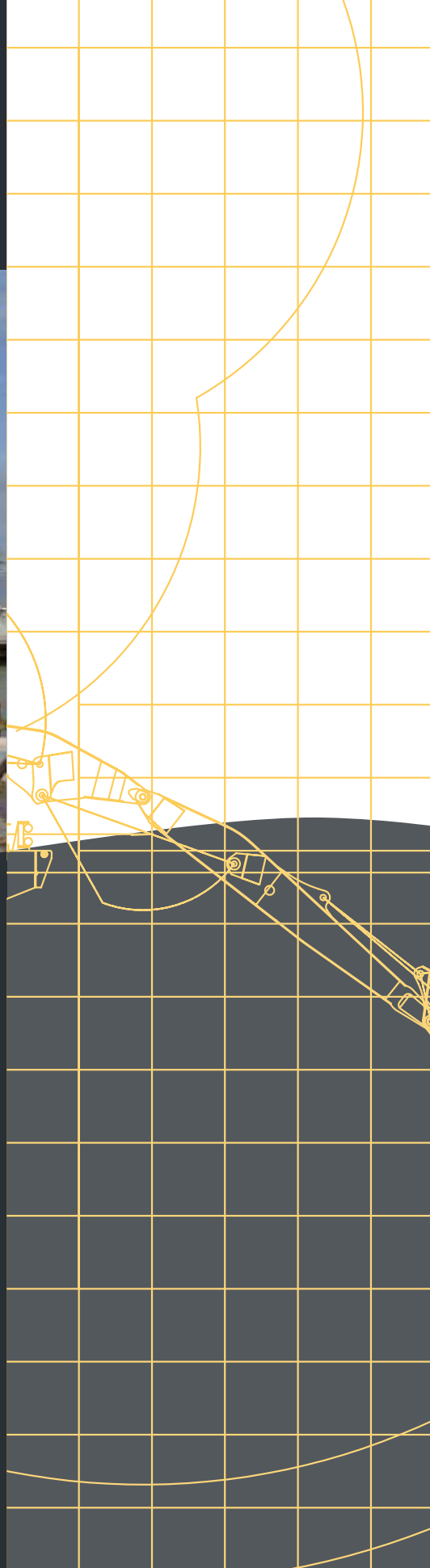


# ABEKO MARINE



## ABEKO SERVER 2

### BACKHOE DREDGER

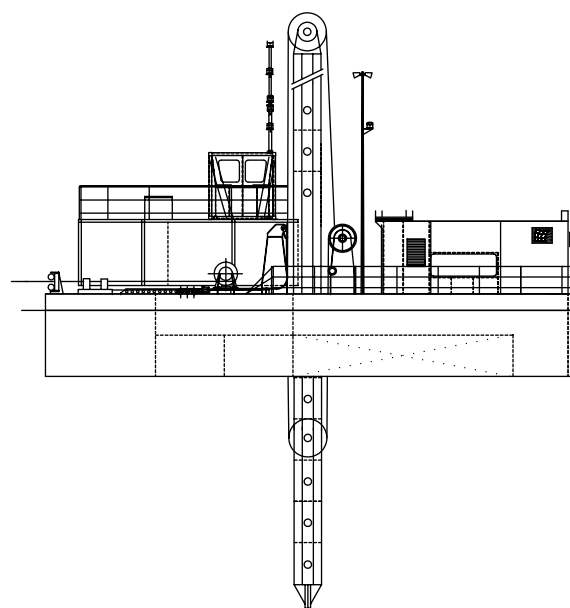




## MAIN PARTICULARS

TYPE	: DIPPER DREDGER
NAME	: ABEKO SERVER 2
PORT OF REGISTRATION	: BEVERWIJK, HOLLAND
BUILDER	: SCHEEPSWERF HARDINXVELD BV
CLASS	: BUREAU VERITAS
YEAR OF CONSTRUCTION	: 1997
CLASSIFICATION	: PONTOON, DEEP SEA, SPECIAL SERVICE / DIPPERDREDGER ASSISTED PROPULSION, MANNED WORKING 15MILE-5BFR.
MAIN PARTICULARS	: LENGTH O.A. = 48.00M : LENGTH B.P.P. = 46.129M : BREADTH MLD = 11.20M, 12.20 WITH TYRES : HULL = 3.00M
FLOATING DRAUGHT	: 2.40M INCLUDING EXCAVATOR
DECK LOAD	: 10 T/M2

Abeko Server 2 Diggingcurve  
with Hitachi EX1200 triple boom.

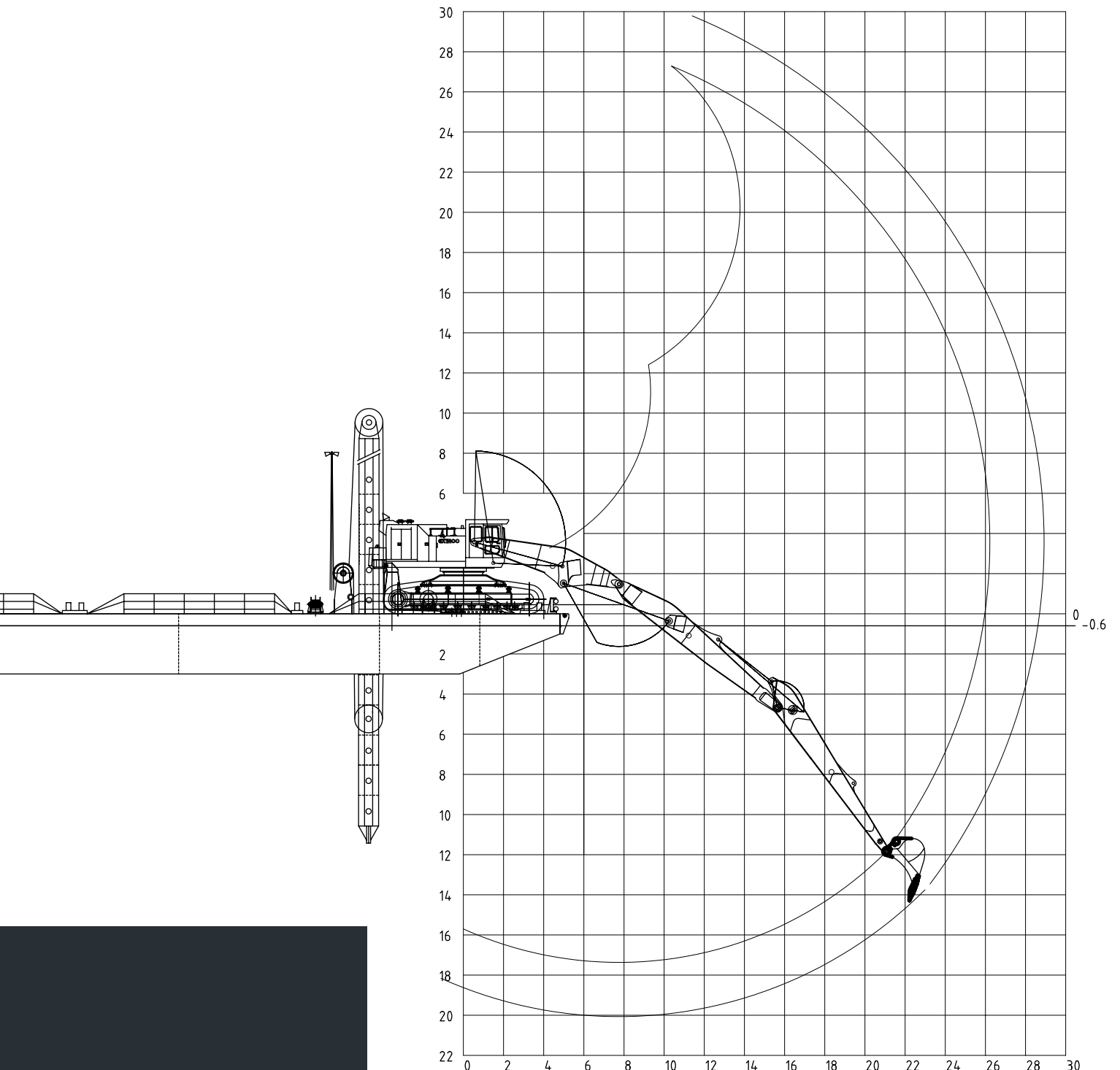


WHEELHOUSE

# EQUIPMENT

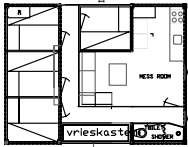
SPUDS	: 4 STABILISING SPUDS (1.2x1.2M), LIFTING CAPACITY 40 TON/SPUD
HYDR. POWER	: 1x700HP, 1x600HP
ELECTRIC POWER	: 400KVA 400V 50HZ
HARBOUR GENERATOR	: 100KVA 400V 50HZ
LIGHT GENERATOR	: 45KVA 400V 50HZ
BALLAST SYSTEM	: 120M <sup>3</sup> /HOUR, 7 BALLAST TANKS
WINCHES	: 4x 10 TON HYDR. DRIVEN
THRUSTERS	: 1 FRONT THRUSTER, 1 BACK THRUSTER EACH 480HP ONLY FOR MANOEUVRING AT DREDGING SITE. FABR. /MODEL, SCHOTTEL SPJ82, 480HP
ANCHORS	: 1,8 TON
ACCOMODATIONS	: 4 CREW FULL ACCOMMODATION
WHEELHOUSE	: ALL OPERATIONS, RADIO, SURVEY-EQUIPMENT
STORE ROOM	: WITH ACCESS FROM DECK WITH LID 2.5x5M
RAMPS (OPTION)	: 2 RAMPS TO ACCESS THE PONTOON WITH AN EXCAVATOR

SERVER 2 THRUSTER MOTOR  
SCHOTTEL SPJ82, 480HP

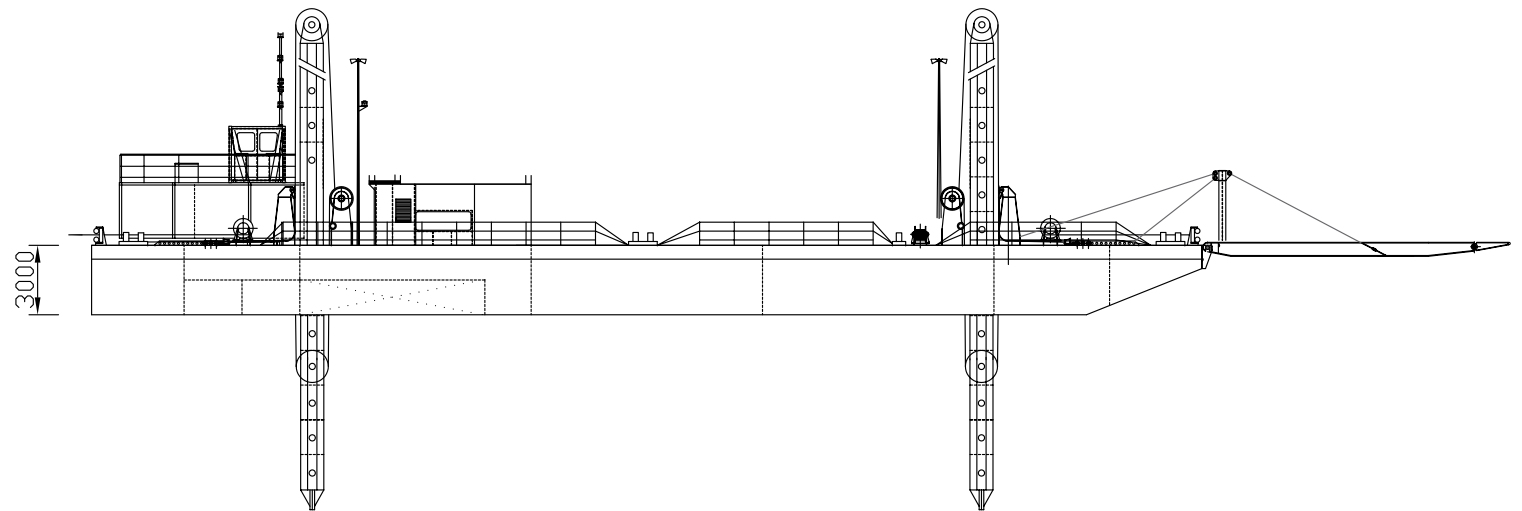
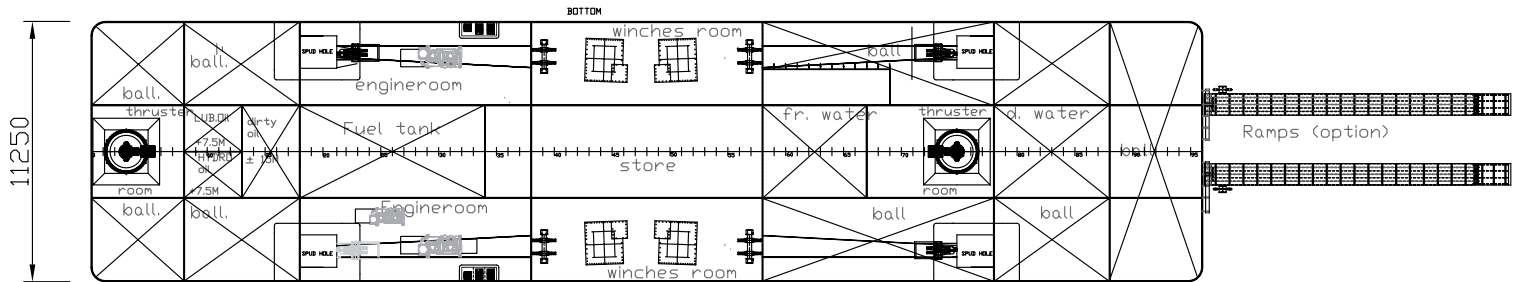
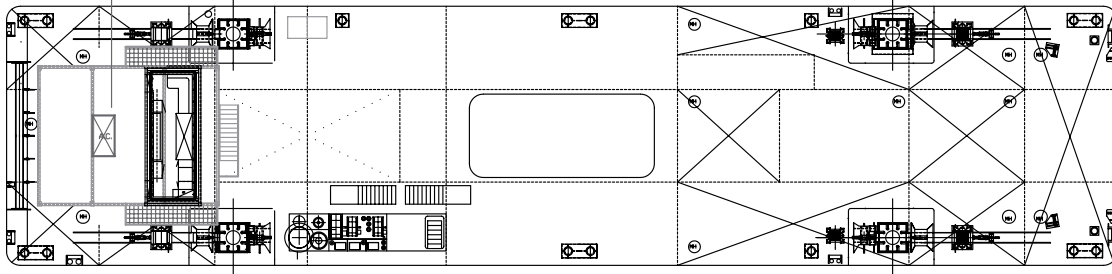


# VOLUME CAPACITIES

FUEL	: 46.000L
FRESH WATER	: 45.000L
DIRTY WATER	: 50.000L
ENGINE OIL	: 7.500L
HYDR. OIL	: 7.500L
DIRTY OIL	: 15.000L



48000



DREDGING ROCK IN ROTA (SPAIN)

## EXCAVATOR

FABRICATION AND TYPE	: HITACHI EX1200-5
BUILDING YEAR	: 2008
WEIGHT	: 170 TON
EXCAVATOR ENGINE POWER	: 567KW
MAXIMUM DREDGING DEPTH	: 18M
BUCKET CAPACITY HD	: 4M <sup>3</sup>
BUCKET CAPACITY MUD BUCKET	: 6M <sup>3</sup>
BOOM	: ABEKO TRIPLE BOOM
STICK/ARM	: SHORT = 5.5M AND LONG = 8.5M
WORK TOOLS	: HYDRAULIC BREAKER, BUCKETS, CLAMSHELL-GRAPS, GRAPPLE, GRAB, RIPPER
SPECIALITIES	: TRACK TYPE EXCAVATOR
	TRIPLE BOOM
	EXTENDED UNDERCARRIAGE
	UPGRADED CYLINDERS
	SAFETY VALVES ON ALL HYDRAULIC CYLINDERS



FRONTSIDE OVERVIEW ABEKO SERVER 2

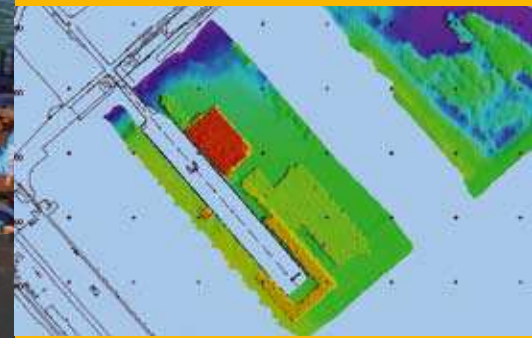


IMAGE OF THE PDS2000 SURVEY SYSTEM



ABEKO SERVER 2, DREDGING IN TENERIFE (SPAIN)

HEAD OFFICE:  
KANAALWEG 2A  
1948 PN BEVERWIJK

CORUS LOCATION:  
HECKETTWEG 5C02  
1951 JZ VELSEN-NOORD

TEL.: +31 (0) 251 276 070  
FAX: +31 (0) 251 212 550

E-MAIL: [INFO@ABEKO.NL](mailto:INFO@ABEKO.NL)

[www.abeko.nl](http://www.abeko.nl)

