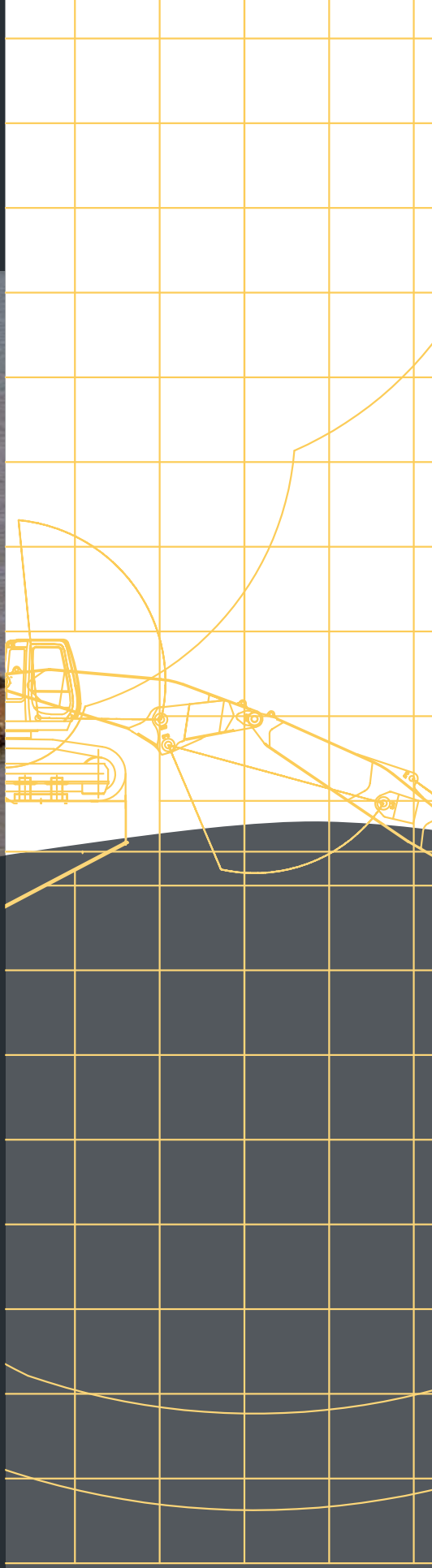


# ABEKO MARINE



## ABEKO SERVER 3 BACKHOE DREDGER

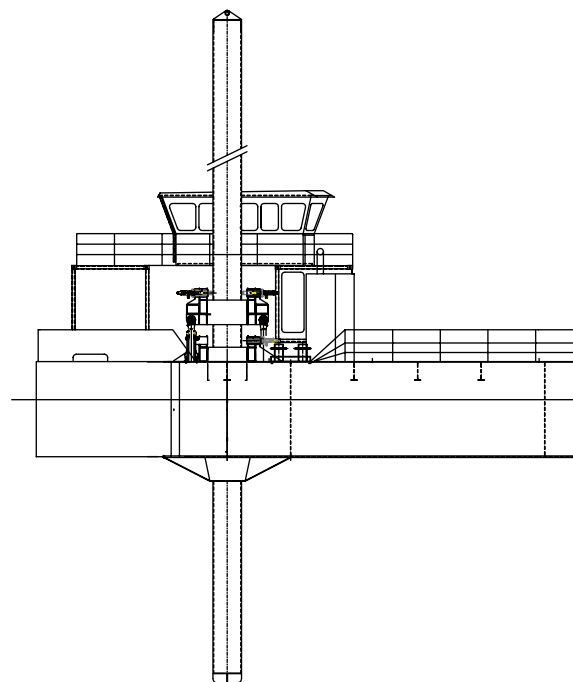




## MAIN PARTICULARS

TYPE	: DIPPER DREDGER
NAME	: ABEKO SERVER 3
PORT OF REGISTRATION	: BEVERWIJK, HOLLAND
BUILDER	: SCHEEPSWERF SLOB BV
CLASS	: BUREAU VERITAS
YEAR OF CONSTRUCTION	: 1999
NOTATION	: 100 AN PONTOON, DEEP SEA, SPECIAL SERVICE / DIPPERDREDGER ASSISTED PROPULSION, UNRESTRICTED
MAIN PARTICULARS	: LENGTH O.A. = 44M : BREADTH MLD = 11.38M, 12.38 WITH TYRES : HULL = 3,765M
FLOATING DRAUGHT	: 2.75M INCLUDING EXCAVATOR
DECK LOAD	: 8 T/M <sup>2</sup>

Abeko Server 3 Diggingcurve  
with Hitachi ZX870 triple boom.

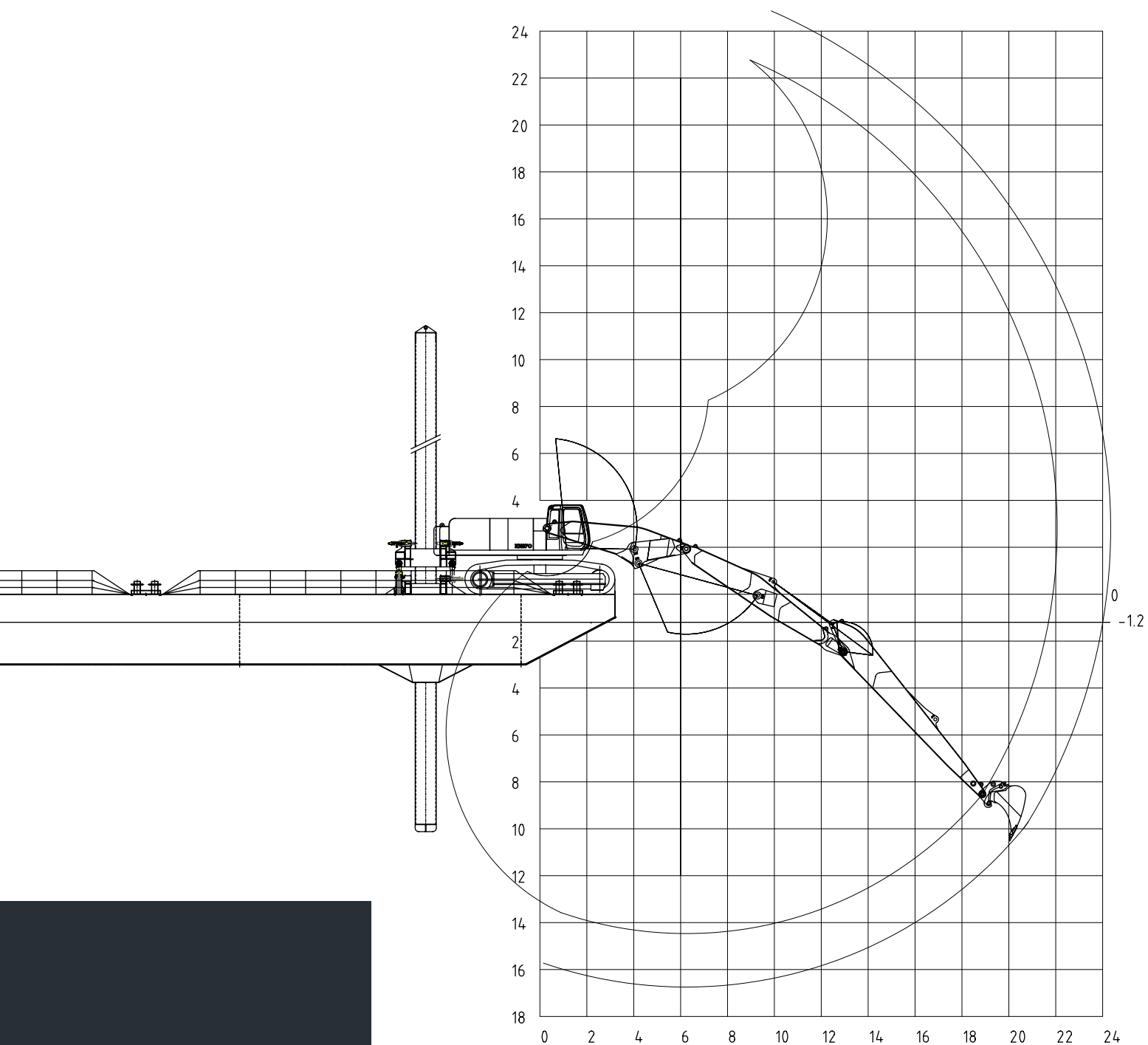


WHEELHOUSE

# EQUIPMENT

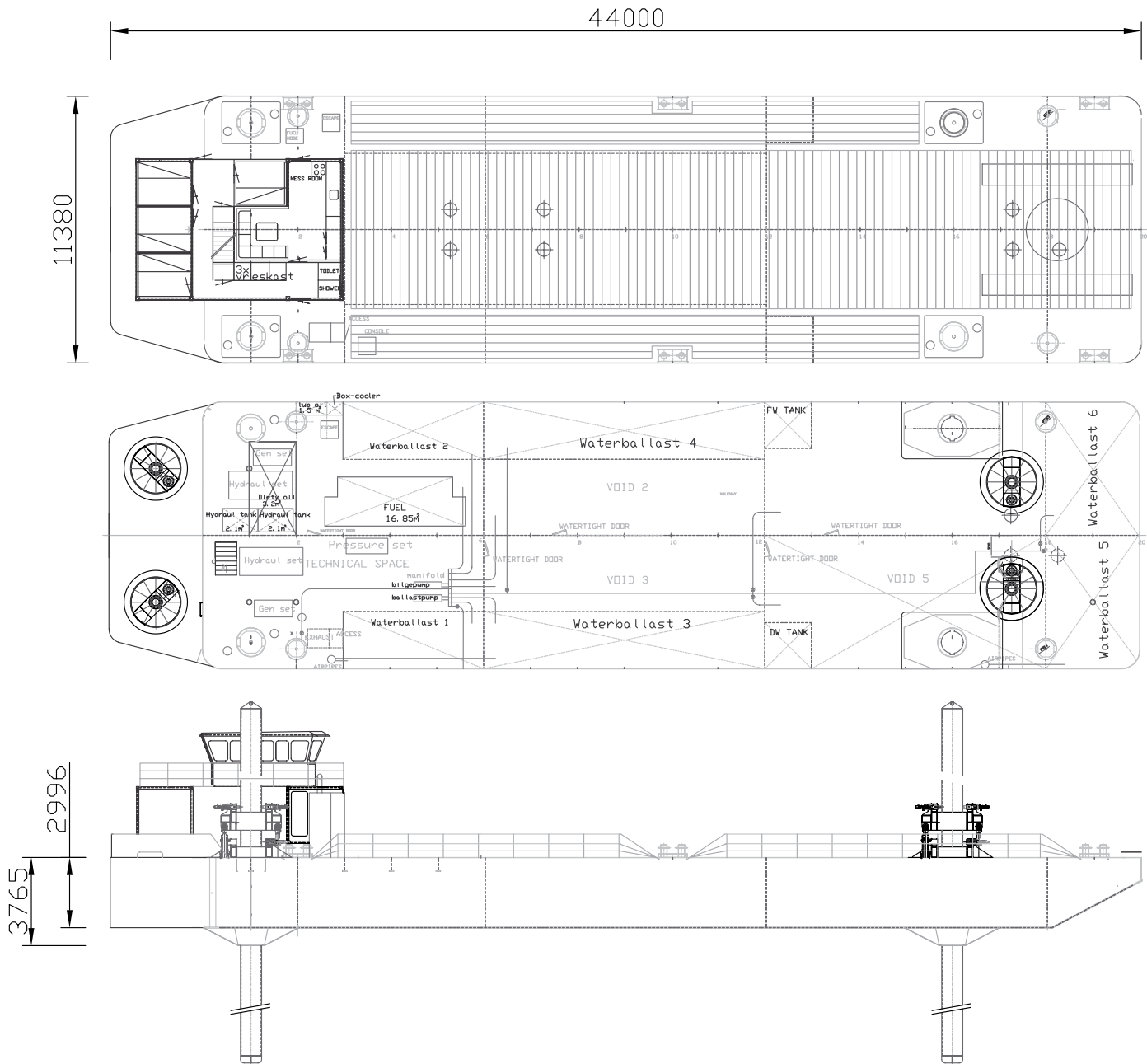
SPUDS	: 4 STABILISING SPUDS (D= 900MM), LIFTING CAPACITY 100TON/SPUD
HYDR. POWER	: 2x650HP
ELECTRIC POWER	: 400KVA 400V 50HZ
HARBOUR GENERATOR	: 100KVA 400V 50HZ
LIGHT GENERATOR	: 45KVA 400V 50HZ
BALLAST SYSTEM	: 100 M <sup>3</sup> /HOUR, 6 BALLAST TANKS
WINCHES	: 1x 10 TON HYDR. DRIVEN
THRUSTERS	: 2 FRONT THRUSTERS, 2 BACK THRUSTERS EACH 300 HP ONLY FOR MANOEUVRING AT DREDGING SITE. FABR. /MODEL, FOMI 300
ANCHORS	: 1,5 TON
ACCOMMODATIONS	: 3 CREW FULL ACCOMMODATION
WHEELHOUSE	: ALL OPERATIONS, RADIO, SURVEY-EQUIPMENT
RAMPS(OPTION)	: 2 RAMPS TO ACCESS THE PONTOON WITH AN EXCAVATOR

SERVER 3 SPUD-POLE SYSTEM



# VOLUME CAPACITIES

FUEL	: 17.000L
FRESH WATER	: 10.000L
DIRTY WATER	: 10.000L
ENGINE OIL	: 1.500L
HYDR. OIL	: 4.200L
DIRTY OIL	: 3.200L



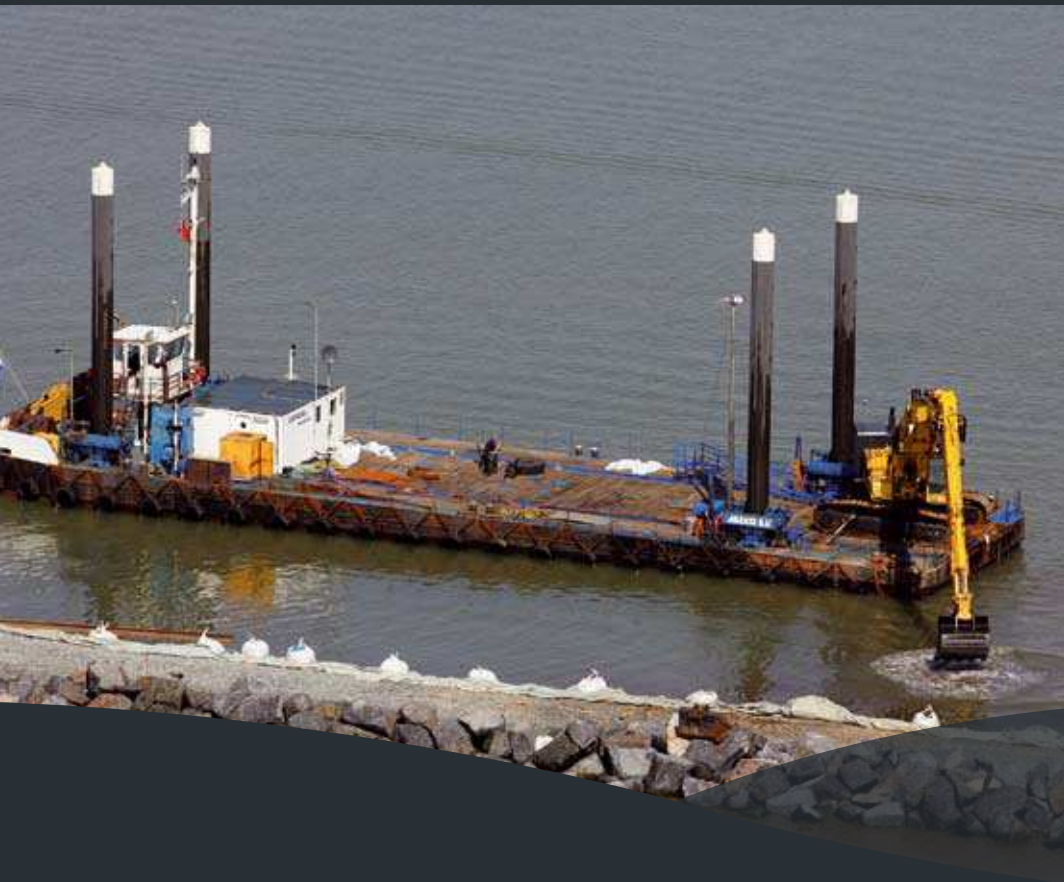
# EXCAVATOR



DREDGING IN GREAT YARMOUTH (UK)

FABRICATION AND TYPE	: HITACHI ZX870LCH Zaxis-3
BUILDING YEAR	: 2008
WEIGHT	: 120 TON
EXCAVATOR ENGINE POWER	: 397KW
MAXIMUM DREDGING DEPTH	: 15M
BUCKET CAPACITY HD	: 3.5M <sup>3</sup>
BUCKET CAPACITY MUD BUCKET	: 5M <sup>3</sup>
BOOM	: ABEKO TRIPLE BOOM
STICK/ARM	: SHORT = 5.4M AND LONG = 8.5M
WORK TOOLS	: HYDRAULIC BREAKER, BUCKETS, CLAMHELL-GRAPS, GRAPPLE GRAB, RIPPER
SPECIALITIES	: TRACK TYPE EXCAVATOR TRIPLE BOOM UPGRADED CYLINDERS SAFETY VALVES ON ALL HYDRAULIC CYLINDERS





FRONTSIDE OVERVIEW ABEKO SERVER 3,  
DIGGING WITH CLAMSHELL GRAP AND  
FILLING SPLITBARGE

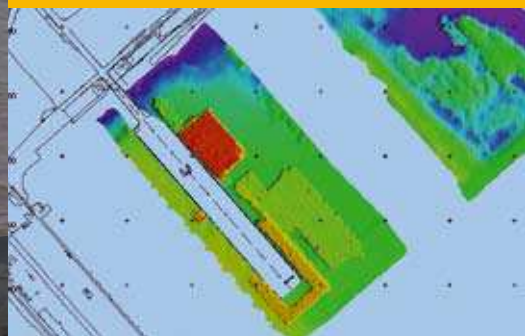


IMAGE OF THE PDS2000 SURVEY SYSTEM



ROCK PLACING IN GREAT YARMOUTH (UK)

HEAD OFFICE:  
KANAALWEG 2A  
1948 PN BEVERWIJK

CORUS LOCATION:  
HECKETTWEG 5C02  
1951 JZ VELSEN-NOORD

TEL.: +31 (0)251 276 070  
FAX: +31 (0)251 212 550

E-MAIL: [INFO@ABEKO.NL](mailto:INFO@ABEKO.NL)

[www.abeko.nl](http://www.abeko.nl)

