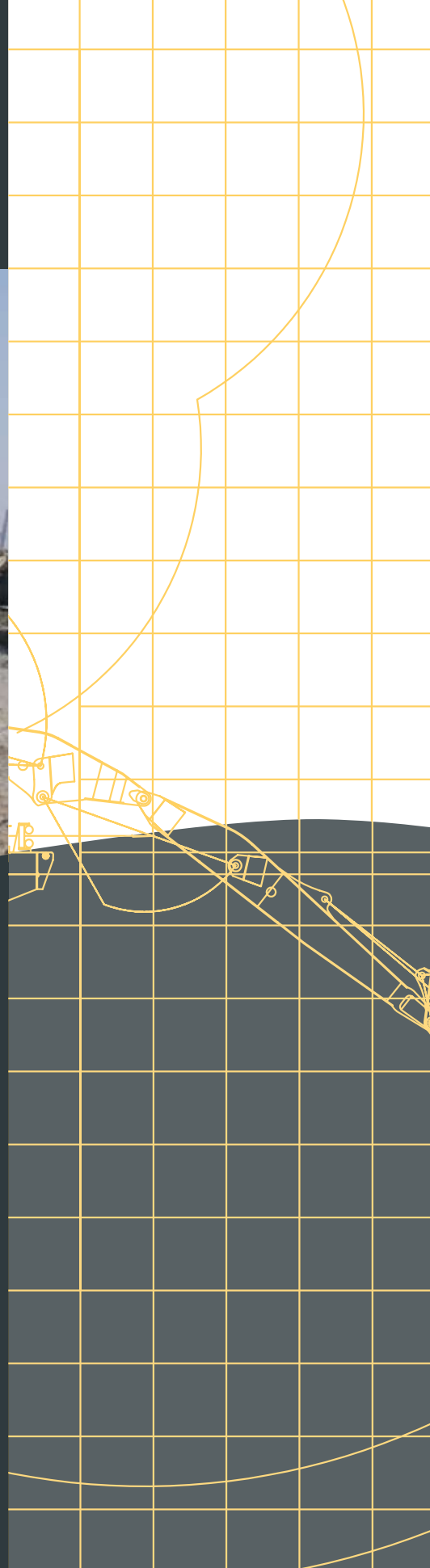


# ABEKO MARINE



## HITACHI EX1200

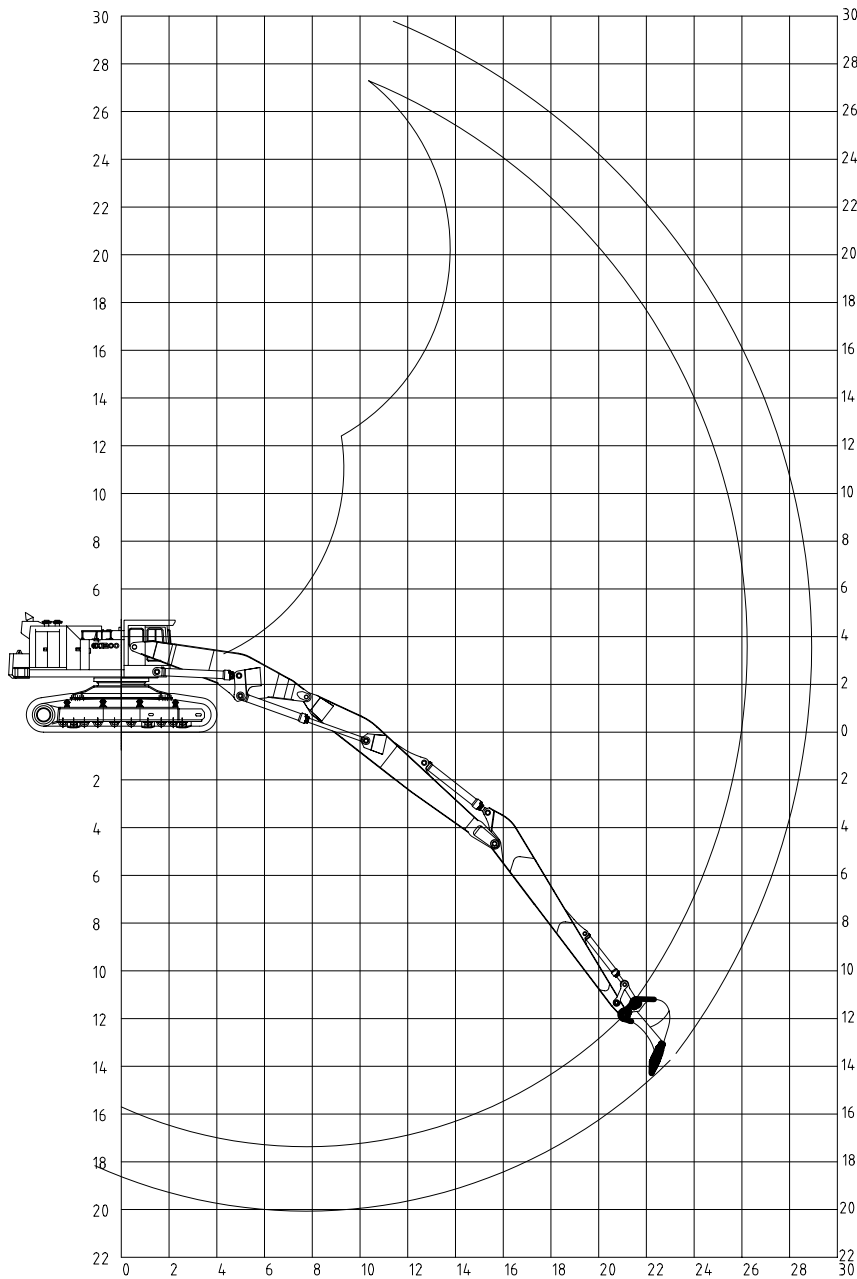
OPERATING WEIGHT: 170 TON

BACKHOE BUCKET: 4M<sup>3</sup> - 6M<sup>3</sup>

REACH: 29M

DIGGING FORCE: 35 TON

Diggingcurve Hitachi EX1200  
8.5m stick



## EXCAVATOR

FABRICATION AND TYPE	: HITACHI EX1200-5
BUILDING YEAR	: 2008
WEIGHT	: 170 TON
EXCAVATOR ENGINE POWER	: 567KW
MAXIMUM DREDGING DEPTH	: 20M
BUCKET CAPACITY HD	: 4M <sup>3</sup>
BUCKET CAPACITY MUD BUCKET	: 6M <sup>3</sup>
BOOM	: ABEKO TRIPLE BOOM
STICK/ARM	: SHORT = 5.5M AND LONG = 8.5M
WORK TOOLS	: HYDRAULIC BREAKER, BUCKETS, CLAMSHELL-GRAPS, GRAPPLE, GRAB, RIPPER
SPECIALITIES	: TRACK TYPE EXCAVATOR TRIPLE BOOM EXTENDED UNDERCARRIAGE UPGRADED CYLINDERS SAFETY VALVES ON ALL HYDRAULIC CYLINDERS



PLACING 12 TON ACROPODES IN A  
BREAKWATER, RAS LAFFAN (QATAR)



DIGGING A CANAL IN DUBAI (UAE)



WORKING WITH 2 MACHINES ON A  
HARBOUR PROJECT, RAS AL KHAIMAH (UAE)