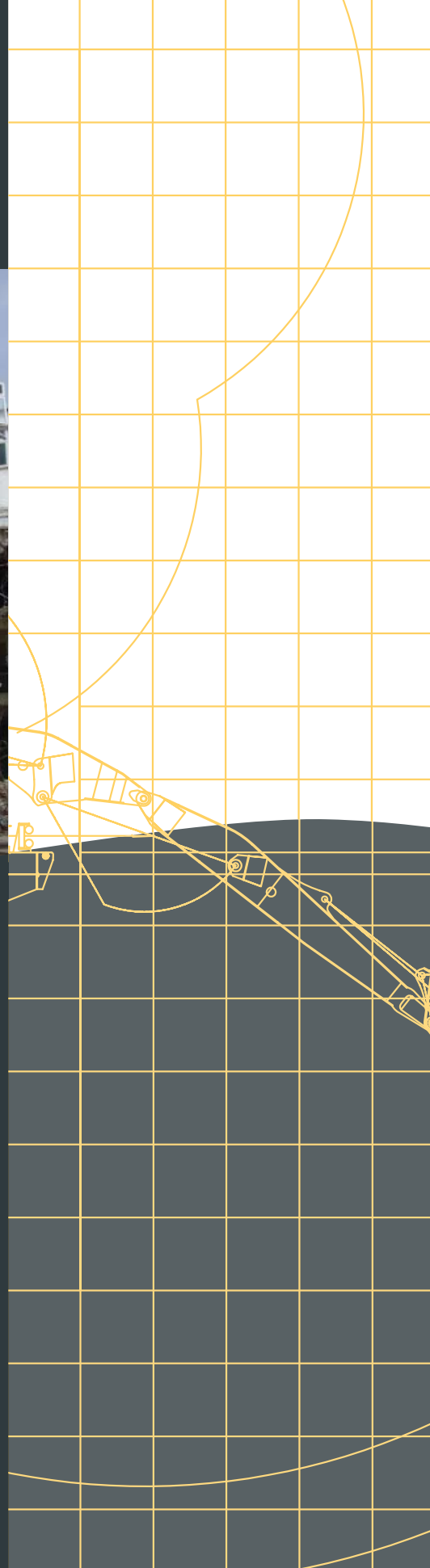


ABEKO MARINE



HITACHI ZX870

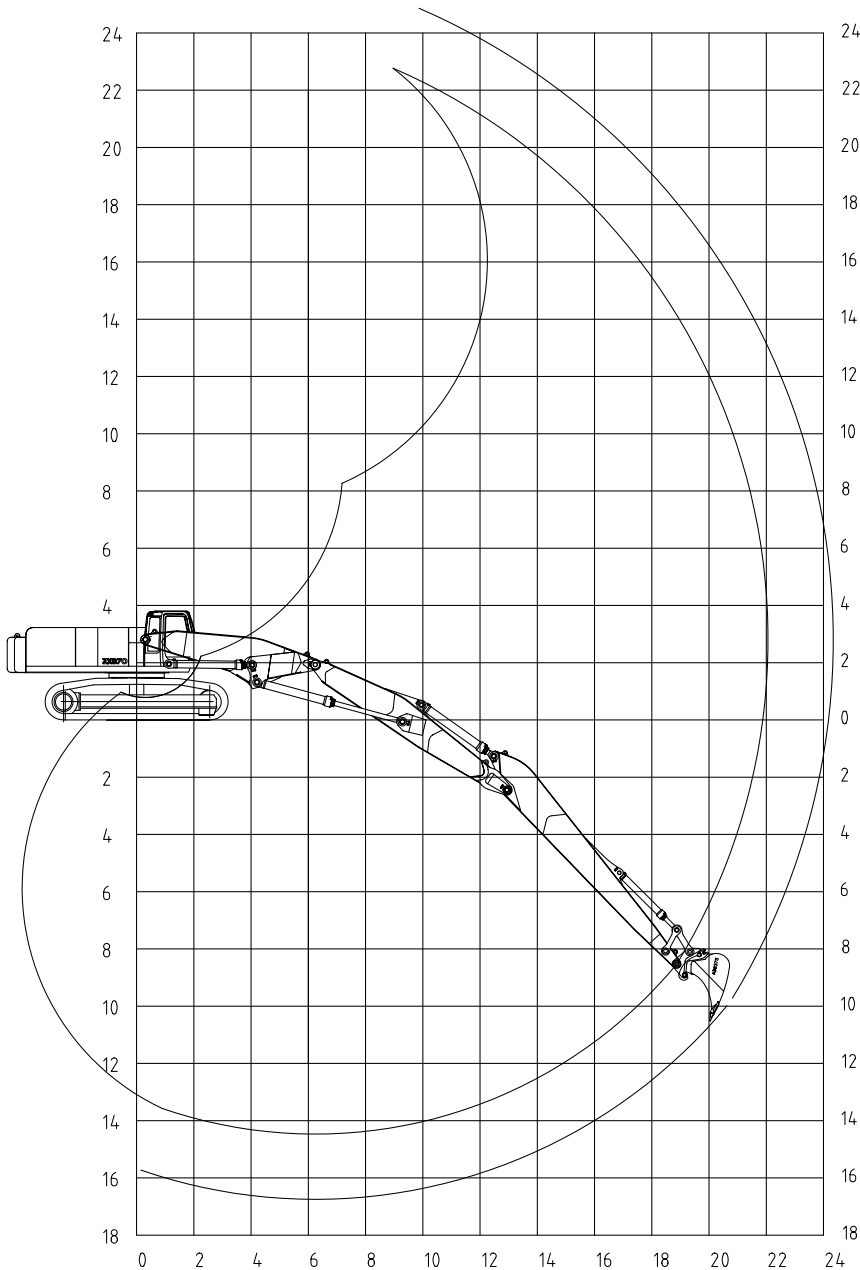
OPERATING WEIGHT: 120 TON

BACKHOE BUCKET: 3,5M³ - 5M³

REACH: 24M

DIGGING FORCE: 30 TON

Diggingcurve Hitachi ZX870
triple boom
8.5m stick



PLACING 8 TON ACROPODES IN A
BREAKWATER, RAS LAFFAN (QATAR)



PLACING 6 TON ANTIFERS ON A BREAKWATER
WITH A HYDR. GRAPPLE, RAS LAFFAN
(QATAR)

EXCAVATOR

FABRICATION AND TYPE	: HITACHI ZX870
BUILDING YEAR	: 2008
WEIGHT	: 120 TON
EXCAVATOR ENGINE POWER	: 397KW
MAXIMUM DREDGING DEPTH	: 17M
BUCKET CAPACITY HD	: 3,5M ³
BUCKET CAPACITY MUD BUCKET	: 5M ³
BOOM	: ABEKO TRIPLE BOOM
STICK/ARM	: SHORT = 5.5M AND LONG = 8.5M
WORK TOOLS	: HYDRAULIC BREAKER, BUCKETS, CLAMSHELL-GRAPS, GRAPPLE, GRAB, RIPPER
SPECIALITIES	: TRACK TYPE EXCAVATOR TRIPLE BOOM UPGRADED CYLINDERS SAFETY VALVES ON ALL HYDRAULIC CYLINDERS



DREDGING IN EGYPT